



Maiden Life Försäkrings AB

Solvency and Financial Condition Report (SFCR)

For the twelve month period ending December 31, 2025

Approval Date 06 April 2026

Maiden Life Försäkrings AB
Solvency and Financial Condition Report (SFCR)
For the twelve month period ending December 31, 2025

Contents

Summary	3
A. Business and Performance	8
A.1. Business	8
A.2. Underwriting performance	10
A.3. Investment performance	11
A.4. Performance of other activities	11
A.5. Any other information	12
B. System of Governance	13
B.1. General information on the system of governance	13
B.3. Risk management system including the own risk and solvency assessment	18
B.4 Internal control system	22
B.5 Internal audit	23
B.6 Actuarial function	24
B.7 Outsourcing	25
B.8 Any other information	28
C. Risk Profile	29
C.1 Underwriting risk	29
C.2 Market risk	31
C.3 Credit risk	33
C.4 Liquidity risk	34
C.5 Operational risk	35
C.6 Other material risks	36
C.7 Any other information	39
D. Valuation for Solvency Purposes	40
D.1 Assets	40
D.2 Technical provisions	40
D.3 Other liabilities	45

Maiden Life Försäkrings AB
Solvency and Financial Condition Report (SFCR)
For the twelve month period ending December 31, 2025

D.4 Alternative methods for valuation	45
D.5 Any other information	45
E. Capital Management.....	46
E.1 Own Funds	46
E.2 Solvency Capital Requirement and Minimum Capital Requirement	47
E.3 Use of the duration-based equity risk sub-module in the calculation of the Solvency Capital Requirement	48
E.4 Differences between the standard formula and any internal model used	48
E.5 Non-compliance with the Minimum Capital Requirement and non-compliance with the Solvency Capital Requirement	48
E.6 Any other information	49
Appendix: QRT Information (000s)	50

Forward Looking Statements

Certain statements in this report are forward looking statements. These forward looking statements can be identified by the use of forward looking terminology including the terms "believes", "expects", "estimates", "anticipates", "intends", "may", "will" or "should" or in each case, their negative, or other variations or comparable terminology. These forward looking statements reflect the Company's current expectations concerning future events. They involve various risks, uncertainties and other factors which may cause the actual results, performance or achievements of the Company, third parties or the industry to be materially different from any future results, performance or achievements expressed or implied by such forward looking statements. Such risks, uncertainties and other factors include, amongst other things, general economic and business conditions, industry trends, competition, changes in regulation, currency fluctuations, changes in business strategy or development and political and economic uncertainty. There can be no assurance that the results and events contemplated by these forward looking statements will in fact occur.

Maiden Life Försäkrings AB
Solvency and Financial Condition Report (SFCR)
For the twelve month period ending December 31, 2025

Summary

Maiden Life Försäkrings, AB. (“Maiden LF” or the “Company”), corporation number 516406-0468, is licensed to underwrite direct and indirect insurance for Class 1a – Life Insurance and Class 1b – Supplementary Insurance to Class 1a. Maiden LF is domiciled in Sweden however coverage is provided throughout Europe under the “Provision of Freedom of Services” where passports have been granted.

Passports for Class 1a and 1b are held for the following countries: Austria, Belgium, Bulgaria, Czech Republic, Denmark, Estonia, Finland, France, Germany, Greece, Hungary, Ireland, Latvia, Malta, The Netherlands, Norway, Poland, Romania, Slovakia, Slovenia, and Spain.

To underwrite in the UK the Company has a UK branch, Maiden Life Försäkrings AB, UK Branch (“Maiden LF-UK” or “UK Branch”). Maiden LF-UK (firm reference number: 464517) is authorized and regulated by the Prudential Regulatory Authority and Financial Conduct Authority.

Maiden LF is a subsidiary of Maiden Holdings, Ltd. (“Maiden” or the “Group” or the “Shareholder”). Maiden is a Bermuda based holding company.

On 27 May 2025 Maiden and Kestrel Group LLC (“Kestrel”) completed a combination agreement to combine and form a new, publicly listed specialty program group operating under the name Kestrel Group Ltd (“Kestrel Group”). Kestrel Group is traded on the NASDAQ (KG). The Vermont Department of Financial Regulation is the Group supervisor. This Solvency and Financial Condition Report (“SFCR”) has been prepared to assist stakeholders to understand the capital position of the Company under the Solvency II framework.

The Company has ensured that it is Solvency II (“SII”) compliant.

There have been no material changes during 2025 to the reporting requirements of the Company and the Company continues to file QRTs quarterly, with an additional QRT reported annually. Within the QRTs the Company considers its solvency under SII standards and valuation methodologies. There is further information in the SFCR on how the valuation for solvency purposes varies from the valuation for accounting purposes. The Company continues to have adequate capital under the valuation for solvency purposes basis.

Business and Performance Summary

Based on the change of strategy adopted by the Company in 2024, insurance programs are being managed to the conclusion of their current contract. Insurance programs are either being renewed by entities of AmTrust Financial Services, Inc (“AmTrust”) (based on the renewal rights transaction between the Company and AmTrust), by other local insurers, or terminated.

Maiden Life Försäkrings AB
Solvency and Financial Condition Report (SFCR)
For the twelve month period ending December 31, 2025

In November 2024, the Shareholder entered into a sale and purchase agreement with a potential acquirer, however, the transaction did not complete.

The Shareholder continues to pursue a sale of the Company while, together with the Board preparing for a potential run-off scenario.

The Company continues to work diligently with its distributors and insureds to provide support during the transition and non renewal of programs.

System of Governance Summary

During 2025 and up to the Approval Date, the Company made the following structural changes to its System of Governance:

- Deputy Managing Director: The Company no longer has a Deputy Managing Director in place.
- Compliance Function: The Company's Compliance Function was provided by the Company's Head of Compliance, Mats Ericsson until 30 November 2025. From 1 December 2025, the Company outsourced the Compliance Function to Marsh Management Services Sweden AB.
- Compliance Function Beställansvarig: This position was not required under December 2025 when the Compliance Function was outsourced. At this point, the position was fulfilled by Charlotte Boij, Non Executive Director.
- Money Laundering Risk Officer ("MLRO"): In line with the reduction of business, the Company concluded it no longer required an internal MLRO from 1 December 2025 and outsourced the AML/Sanctions function to Marsh Management Services AB effective 1 December 2025.

Other personnel changes within the Company's system of governance have occurred and are outlined within this SFCR.

There were no other material changes to the Company's system of governance during 2025.

Maiden Life Försäkrings AB
Solvency and Financial Condition Report (SFCR)
For the twelve month period ending December 31, 2025

Risk Profile Summary

The risks that the Company is exposed to have been identified and appropriate mitigation measures have been put in place. The risks evaluated as posing the highest threat are:

- **Inability to maintain Solvency Margin:** The risk that the desired solvency margin cannot be maintained. The Company closely monitors solvency and undertakes capital forecasts at least annually through the completion of the Own Risk Solvency Assessment (“ORSA”) or when the risk profile of the Company materially changes.
- **Loss of key resources:** The risk that key personnel leave. Key skills and expertise to manage the Company through its current strategic goals are being monitored, with consideration being given to the potential to further outsource roles as any loss of resource requires.
- **Regulatory Risk (Compliance):** The risk that the Company breaches regulatory requirements. The Company has a corporate governance structure in place designed to minimise the risk of non-compliance occurring.
- **General Data Protection Regulation (“GDPR”) Risk:** The Company complies with GDPR and UK GDPR as applicable and has a privacy by design approach to personal data.
- **Vendor/Outsource Provider does not perform against service/contractual agreements:** The risk that third party provider performance deteriorates is further exposed due to lack of attention in light of declining business volumes, or less vigorous audit oversight.
- **Cancellation or breaking of an outsourcing agreement:** The risk that the cancellation or breaking of an outsourcing agreement threatens or disrupts the Company’s continuous operations. All outsourcing agreements are subject to internal review, and have required time periods in place for notice of cancellation by either party.
- **IT risks:** The Company could be exposed to IT risks if there were unauthorised system access, software and hardware failures, or Cloud computing failures. The Company is supported by dedicated IT resource through the Group, and an infrastructure that is tested rigorously to proactively identify and manage IT vulnerabilities.
- **Delays to concluding strategic decisions:** The Company could incur additional operational expenses should the timeline in which a strategic decision be reached extend beyond that currently forecast. This is the primary goal and focus of the Company and the Board is continually receiving updates on forecasts and solvency projections.
- **Maintaining appropriate oversight of third party providers:** The risk that the Company does not maintain an appropriate oversight of third party providers. This can lead to the

Maiden Life Försäkrings AB
Solvency and Financial Condition Report (SFCR)
For the twelve month period ending December 31, 2025

risk of deteriorating service delivery and poor consumer outcomes. The Company retains responsibility for activities that are outsourced to third parties.

The Company regularly reviews the risks that it is exposed to and rating of these risks. Following the change to the strategic direction in 2024, all risks were fully re-evaluated by the Company, and changes made where appropriate.

The ESG risks that the Company are exposed to are outlined in the risk register as:

- Investment Risk: The risk that investments are downgraded as industries or individual companies become less attractive owing to the ESG credentials.
- Underwriting Risk: The risk that climate change leads to increased incidence or severity of losses.
- Underwriting Risk: The risk that climate change results in a pandemic, impacting risks underwritten by the Company.

The ESG risk is rated low risk.

Valuation for Solvency Purposes Summary

There were no material changes to the Company's valuation methods for solvency purposes during 2025.

Capital Management Summary

The Company monitors capital adequacy as part of its continual capital management activities and at year end is in line with the Company's risk based benchmark for meeting capital adequacy. At year end 2025, the SCR margin and MCR margin were 477% and 122% respectively.

To manage capital requirements, the Company:

- entered into a whole account Quota Share agreement with Maiden Reinsurance Ltd., a sister company domiciled in the State of Vermont, United States effective October 1st, 2021. The agreement is structured on the basis of a Funds Withheld arrangement.
- Received additional capital contributions of €200, €910 and €630 in September 2025, December 2025 and March 2026 respectively from the Shareholder

Maiden Life Försäkrings AB
Solvency and Financial Condition Report (SFCR)
For the twelve month period ending December 31, 2025

- Received a signed Parental Guarantee (“PG”) from the Shareholder under which the Company will be able to receive additional capital under certain circumstances.

In addition, the Company has completed an ORSA which demonstrates that, with the options available to manage solvency if necessary, the Company continues to meet solvency requirements.

Maiden Life Försäkrings AB
Solvency and Financial Condition Report (SFCR)
For the twelve month period ending December 31, 2025

A. Business and Performance

Note: Numbers in EUR 000s.

A.1. Business

A.1.1 Name and legal form

The Company is Maiden Life Försäkrings AB, incorporated in Sweden, corporation number 516406-0468. The legal form of the Company is a Swedish limited liability insurance company (Sw. försäkringsaktiebolag).

A.1.2 Name and contact details of the supervisory authority, and name and contact details of the group supervisor

Finansinspektionen is the supervisory authority of the Company.

Finansinspektionen
Box 7821
103 97 Stockholm

Tel: + 46 8 408 980 00
Fax: + 46 8 24 13 35

The Vermont Department of Financial Regulation is the Group supervisor.

Christine Brown
State of Vermont - Department of Financial Regulation
89 Main Street
Montpelier
VT 05620-0501

Tel: +1- 802-828-3304

A.1.3 Name and contact details of the external auditor

The external auditor is KPMG AB.

KPMG AB
Box 382
101 27 Stockholm

Tel: +46 8 723 91 00

Maiden Life Försäkrings AB
Solvency and Financial Condition Report (SFCR)
For the twelve month period ending December 31, 2025

A.1.4 Description of the holders of qualifying holdings

All shares issued and outstanding for the Company are owned by Maiden Holdings, Ltd., a company incorporated in Bermuda.

A.1.5 Group structure chart

The position of the Company within the Group as at 31 December 2025 is as shown in the diagram below:



Diagram 1: Company position within Group Structure

A.1.6 Material lines of business by segment and geographical region

Products underwritten in 2025 were mainly credit related insurance with a life benefit, although the Company also writes life insurance, stand alone income protection, personal accident, stand alone accidental death policies and life and medical disability products. All products include a life and/or accidental death cover. In addition, products may also include supplementary life benefits such as accident, sickness, permanent total disability, hospitalization and critical illness. The material lines of business are considered to be life and supplementary life.

The Company was on risk through 2025 in Denmark, Finland, Ireland, Sweden and the United Kingdom. The material geographical regions are considered to be UK and Rest of Europe.

Maiden Life Försäkrings AB
Solvency and Financial Condition Report (SFCR)
For the twelve month period ending December 31, 2025

A.1.7 Significant events with a material impact

Based on the change of strategy adopted by the Company in 2024, insurance programs are being managed to the conclusion of their current contract. Insurance programs are either being renewed by entities of AmTrust Financial Services, Inc (“AmTrust”) (based on the renewal rights transaction between the Company and AmTrust), by other local insurers, or terminated.

In November 2024, the Shareholder entered into a sale and purchase agreement with a potential acquirer, however, the transaction did not complete.

The Shareholder continues to pursue a sale of the Company while, together with the Board preparing for a potential run-off scenario.

The Company continues to work diligently with its distributors and insureds to provide support during the transition and non renewal of programs.

A.2. Underwriting performance

Underwriting performance, excluding operating expenses, by line of business:

€'000	2025		
	Life	Supplementary Life	Total
Gross premiums written	6,326	1,415	7,741
Net premiums earned	3,160	737	3,897
Net commission expense	(338)	(395)	(733)
Net claims incurred	(2,419)	206	(2,213)
Underwriting Income	403	548	951

	2024		
	Life	Supplementary Life	Total
Gross premiums written	14,441	6,896	21,337
Net premiums earned	7,175	3,442	10,617
Net commission expense	(1,265)	(1,161)	(2,426)
Net claims incurred	(4,939)	(852)	(5,790)
Underwriting Income	972	1,429	2,400

Underwriting performance, excluding operating expenses, by geographical area:

Maiden Life Försäkrings AB
Solvency and Financial Condition Report (SFCR)
For the twelve month period ending December 31, 2025

€'000	2025					Total
	Denmark	Ireland	Sweden	UK	Rest of Europe	
Gross premiums written	327	874	200	6,358	(18)	7,741
Net premiums earned	163	439	100	3,189	6	3,897
Net commission expense	(63)	(305)	16	(391)	10	(733)
Net claims incurred	(62)	(96)	(70)	(2,011)	26	(2,213)
Underwriting Income	38	38	46	787	42	951

€'000	2024					Total
	Denmark	Ireland	Sweden	UK	Rest of Europe	
Gross premiums written	920	1,880	8,651	9,740	146	21,336
Net premiums earned	460	940	4,328	4,816	72	10,617
Net commission expense	(47)	(404)	(1,258)	(684)	(33)	(2,426)
Net claims incurred	(270)	(129)	(2,162)	(3,216)	(13)	(5,790)
Underwriting Income	142	408	908	917	26	2,400

A.3. Investment performance

A.3.1 Income and expenses arising by asset class

€'000	31/12/2025	Total Return	Total Return %
Govn Bonds/ Corporate Bonds	1,589	4	0.25%
Cash	6,538	128	2.08%

Investment return on Government and Corporate bonds is shown net of investment fees of €1.

A.3.2 Gains/losses recognized in equity

An unrealized gain on Government and Corporate bonds of €37 was booked to equity in 2025 (2024: gain of €83).

A.3.3 Information about investments in securitizations

The Company has no investments in securitizations.

A.4. Performance of other activities

Revenues are from premiums on the Company's insurance policies, ceding commission on reinsured business, fees from staff performing work for other group companies and income generated from the investment portfolio.

Maiden Life Försäkrings AB
Solvency and Financial Condition Report (SFCR)
For the twelve month period ending December 31, 2025

Expenses consist largely of claims costs, commission and operating expenses.

Other Income Type (€'000)	For the 12 Months Ended Dec 31, 2025	For the 12 Months Ended Dec 31, 2024
Fees from staff performing work for other group companies	569	505
Commission income from sale of renewal rights	(12)	103
Total	557	607

Expense Type (€'000)	For the 12 Months Ended Dec 31, 2025	For the 12 Months Ended Dec 31, 2024
Net loss and loss adjustment expenses	2,213	5,790
Net commission and other acquisition expenses	733	2,426
General and administrative expenses	3,105	3,049
Total Expenses	6,051	11,265

A.5. Any other information

Effective 1 October 2021, the Company entered into a whole account Quota Share agreement with Maiden Reinsurance Ltd., a sister company domiciled in the State of Vermont, United States. The agreement, structured on the basis of a funds withheld arrangement, was effected to provide ongoing capital support to the Company as it developed its business operations.

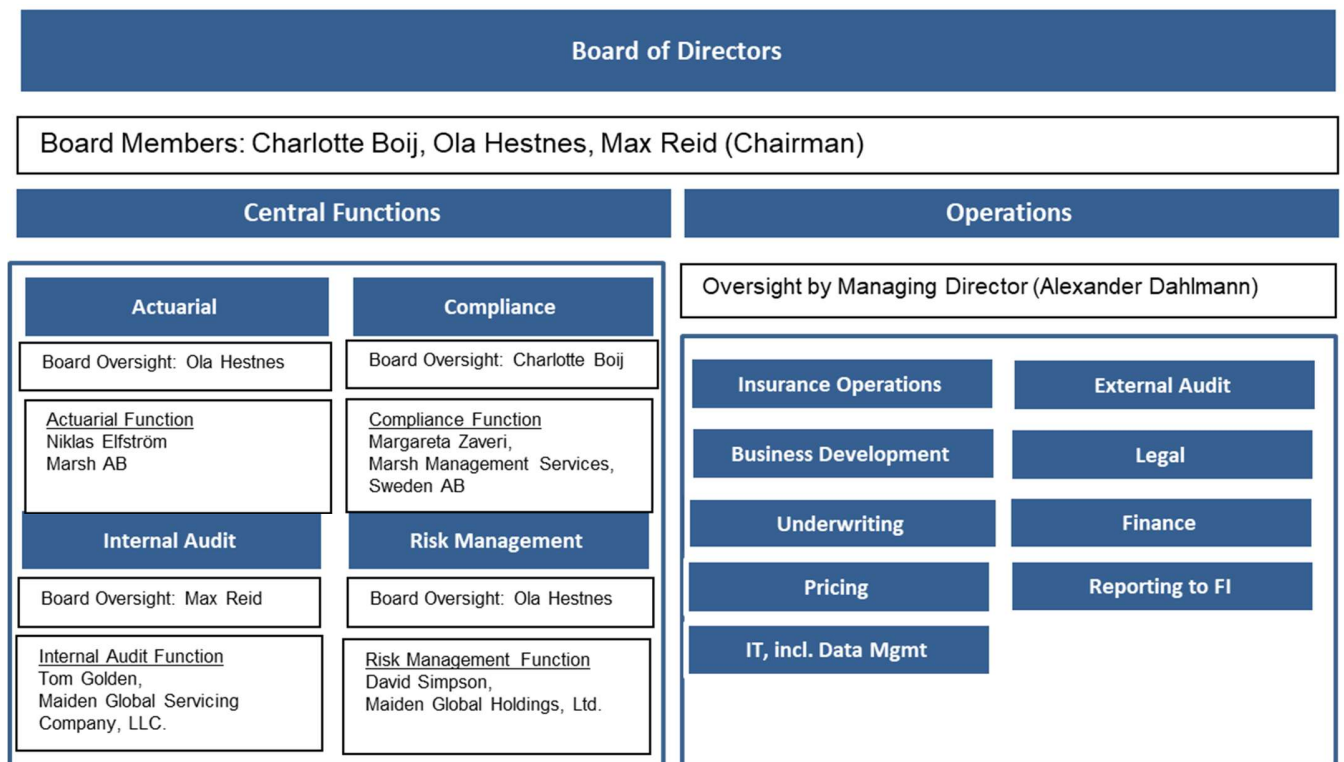
Maiden Life Försäkrings AB
Solvency and Financial Condition Report (SFCR)
For the twelve month period ending December 31, 2025

B. System of Governance

B.1. General information on the system of governance

B1.1 Management structure: roles, responsibilities and segregation of responsibilities

The Company has established a Corporate Governance Framework which ensures that the Company’s Board of Directors (“Board”) is the focal point of the Company’s governance system and is ultimately accountable and responsible for the Company’s performance and conduct. To ensure that the Board fully meets its responsibilities and stewardship in an acceptable manner, the Board has established an appropriate number of functions, each with clear responsibilities and each of which reports to the Board. The system of governance has been established to ensure segregation of duties where appropriate and clear responsibilities for each function.



Note: Correct as of January 2026

Board of Directors

The Board is responsible for setting appropriate strategies and policies, for providing effective and prudent oversight of functions regardless of the extent to which functions are outsourced, and for monitoring the financial performance of the Company. The Board meets as warranted,

Maiden Life Försäkrings AB
Solvency and Financial Condition Report (SFCR)
For the twelve month period ending December 31, 2025

but no less than three times a year. The Managing Director regularly keeps the Board of Directors apprised of significant issues and events.

Central Functions

The central functions which are outsourced each have a nominated Board member that is responsible for overseeing that function.

A central function and operational update report is provided regularly to the Board, where the Board is informed on the activities within each central function and operational area since the prior Board meeting.

Actuarial Function

The Actuarial Function is responsible for the development of the Technical Guidelines including Technical Calculations and implementing the methodologies agreed for calculating technical insurance reserves and technical insurance provisions on an on-going basis. In addition, the Actuarial Function assists in the preparation of the quarterly and annual assessment of capital requirements and the ORSA. This function formally provides a written report to the Board at least annually, with ad hoc updates where necessary.

Compliance Function

The Compliance Function, which is part of the “second line of defence”, promotes and monitors the integrity of the Company by advising on and complying with applicable laws, regulations and administrative provisions, particularly, in respect of the Solvency II directive, industry and professional standards and internal policies. This function formally provides a written report to the Board at least annually, with ad hoc updates where necessary.

Internal Audit

The Internal Audit Function examines and evaluates the functioning, effectiveness and efficiency of the internal control system and system of governance and makes recommendations for improvements. This function is an independent function within the Maiden group, reporting directly to the Board at least annually.

Risk Management Function

The Risk Management Function is in charge of monitoring the risk management system and the general risk profile of the Company. It provides independent oversight of the operations’ adherence to the Risk Management Policy. It presents to the Board detailed reporting on risk exposures and advice on risk management matters. This function formally provides a written report to the Board at least annually, with ad hoc updates where necessary.

Maiden Life Försäkrings AB
Solvency and Financial Condition Report (SFCR)
For the twelve month period ending December 31, 2025

Operations

The Managing Director is responsible for the continuous management of the Company according to the guidelines and procedures approved by the Board of directors. An operational set up has been developed to allow the management of the Company to be conducted in an efficient manner, with clear responsibilities and deliverables for each functional area.

UK Branch

Maiden LF-UK, the UK branch of the Company has three senior manager functions - Head of Branch (SMF 19), MLRO (SMF 17) and Compliance Oversight (SMF 16) in accordance with the requirements of the UK's Senior Managers and Certificate Regime ("SM&CR") which governs how people working in financial services in the UK are regulated. The Head of Branch is responsible for management of the UK branch and provides regular updates to the Company's Board in respect of the branch.

As at the Approval Date, Chris James was Head of Branch and MLRO (SMF 19 and SMF17) and Vincent Eng was Compliance Oversight (SMF 16) for Maiden-LF UK.

B1.2 Material changes in system of governance

During 2025 and up to the Approval Date, the following changes were made to the System of Governance.

Board Composition and Person responsible for outsourced central functions ("Beställansvarig"):

- Cheryl Brunette stepped down from the Board in June 2025
- Mikael Eklöf stepped down from Board in June 2025
- Compliance Function Beställansvarig was not required until December 2025 at which point the position was fulfilled by Charlotte Boij
- Risk Management Function Beställansvarig was fulfilled by Charlotte Boij until November 2025 and from December 2025 by Ola Hestnes

Managing Director and Deputy Managing Directors

- Matthias Schäfer stood down as Managing Director in December 2025 and Alexander Dahlmann took over as Managing Director in January 2026.
- Mikael Eklöf and Mats Ericsson stood down as Deputy Managing Directors in June 2025 and December 2025 respectively.
- The Company currently has no Deputy Managing Director in place

Maiden Life Försäkrings AB
Solvency and Financial Condition Report (SFCR)
For the twelve month period ending December 31, 2025

Money Laundering Risk Officer (“MLRO”)

In line with the reduction of business, the Company decided it no longer required an internal MLRO (Mats Ericsson) from 1 December 2025 and outsourced the AML/Sanctions function to Marsh Management Services AB effective 1 December 2025.

Compliance Function

The Company’s Compliance Function was provided by the Company’s Head of Compliance, Mats Ericsson until 30 November 2025. From 1 December 2025, the Company outsourced the Compliance Function to Marsh Management Services Sweden AB.

Maiden-LF UK

Mats Ericsson stood down as SMF 16 Compliance Oversight for Maiden-LF UK effective December 2025 and was replaced by Vincent Eng.

B1.3 Principles of remuneration

The Remuneration Policy has been set with the aim of promoting effective risk management and preventing excessive risk taking.

The external Non-Executive Directors are remunerated by the Company and the remuneration is reviewed annually by the Chairman of the Company.

Other positions within the Company considered to have a degree of influence of the Company’s risk level are the Chairman, Directors and Managing Director.

B1.4 Performance criteria for entitlement to share options, shares, or variable components of remuneration

No share options, shares or variable remuneration were provided by the Company.

B1.5 Main characteristics of pension schemes for management and central functions

The Company contributes to a private pension scheme for employees in accordance to local standards.

B1.6 Material transactions with shareholders, persons who exercise significant control and management

During the year ended December 31, 2025, no dividends were paid from the Company to the Shareholder.

Maiden Life Försäkrings AB
Solvency and Financial Condition Report (SFCR)
For the twelve month period ending December 31, 2025

B.2. Fit and proper requirements

B2.1 Description of the fit and proper requirements of management and key functions

Members of the Board of directors, persons performing central functions, the Managing Director (and deputies) and the three senior management functions within the UK Branch must have the skills required to manage and supervise the Company. Collectively there must be sufficient knowledge and professional experience in:

- a) Insurance, reinsurance and financial markets: The awareness and understanding of the business and economic environment in which the Company operates.
- b) Strategy and business models of the Company: A detailed understanding of the Company's business strategy and model.
- c) Governance systems: The awareness and understanding of the Company's risks and the capability of managing them and the ability to assess the effectiveness of the Company's arrangements to deliver effective governance, oversight and controls.
- d) Financial and actuarial analysis: The ability to understand and interpret the financial and actuarial information provided by other functions and take it into account in the decision-making process.
- e) Legislation and regulations applicable to the Company: The awareness and understanding of the regulatory framework in which the Company operates.

In addition, the Board, management and central functions must be honest and ethical in their personal and professional behaviour. This includes the disclosure of conflicts of interest.

B2.2 Description of the process for assessing the fit and proper requirements of management and central functions

Upon nomination to the role requiring a fit and proper assessment, a thorough assessment is made of their reputation, experience, and qualifications to ensure suitability for the proposed role. Potential conflicts of interest are evaluated. Once this assessment is completed, it is presented to the Board and recorded in the minutes of the Board meeting.

Annually, the skills and reputation of the Board as a whole and central functions are evaluated to ensure continued adherence to the fit and proper requirements.

In the fit and proper assessment undertaken during the reporting period by the Compliance Function, the central functions, and the Board, collectively met the required standard of maintaining a good working knowledge in each knowledge area, and individually fulfilled the

Maiden Life Försäkrings AB
Solvency and Financial Condition Report (SFCR)
For the twelve month period ending December 31, 2025

proper requirements. Each assessed person completed a detailed questionnaire covering: their qualifications and memberships; relevant skills and experience; good repute and character; independence conflicts of interest and confidentiality; and employment history. All the questionnaires were then reviewed and assessed by the Compliance Function.

Should a situation occur outside of the annual fit and proper assessment process that gives rise to a re-assessment of an individual or central function holder, the Board would be notified and the fitness and probity of the individual re-assessed immediately.

Conflicts of Interests are managed in accordance with the Company's Conflicts of Interests policy. Each member of the Board and the Managing Director complete a Declaration of Interests Form annually. At least once in every 12 month period, all Directors and/or Officers must review the information relating to themselves contained in the Register of Conflicts and declare that the information is correct or make a further declaration if necessary.

B.3. Risk management system including the own risk and solvency assessment

B3.1 Description of the risk management system

The overriding goal of the Company's risk management strategy is to control and achieve, to the greatest extent possible, a reduction in the Company's risk exposure as a means of minimising the impact of undesired and/or unexpected events. The purpose of this is to increase the likelihood of achieving the Company's strategic objectives.

The risk appetite establishes the target amount of risk that the Company is prepared to accept in order to achieve its strategic objectives. Risk appetite balances a cautious management of the operations while achieving shareholder expectations. The primary measure of the Company's aggregate risk appetite is the solvency ratio and the tolerances of this are determined by the Board. The Board also determines risk metrics and tolerances for each risk category that it is exposed to, namely underwriting and reserving risk, reinsurance risk, investment and asset liability management risk and operational risk.

The Board has ultimate responsibility for ensuring that it manages and controls its risk satisfactorily and in order to do this, the governance framework reflects the 'three lines of defense' approach to risk management.

First Line of Defense: Operations

The Managing Director and Operations have primary accountability within the context of day-to-day operations. It ensures that operations are carried out correctly and that risk exposures are identified, evaluated, managed, controlled and reported in accordance with the risk appetite and risk policies set by the Board.

Maiden Life Försäkrings AB
Solvency and Financial Condition Report (SFCR)
For the twelve month period ending December 31, 2025

A Risk Management Committee from within the operational team will meet at least four times a year to review adherence to the Risk Management Policy across the business and document its findings. The Risk Management Committee is responsible for maintaining the Company's risk register. The risk register identifies all the risks of the business, rates their likelihood of occurrence and the severity of their impact should they occur and documents the control mechanisms that are in place to mitigate, transfer or eliminate each risk as appropriate.

Second Line of Defense: Risk Management Function

The Risk Management Function is in charge of monitoring the risk management system and the general risk profile of the Company. It provides independent oversight of the Operations' adherence to the Risk Management Policy. It reports directly to the Board providing detailed reporting on risk exposures and advice on risk management matters.

The Risk Management Function will review risk developments, and independently review outputs, checklists and minutes from the Risk Management Committee. These reviews will be documented and presented to the Board member designated as the Responsible Person with responsibility for Risk Management.

Third Line of Defense: Internal Audit

The Internal Audit function coordinates risk-based audits to evaluate the adequacy and effectiveness of internal controls in order to challenge the design and effectiveness of the risk management system.

The Internal Audit function has full, free and unrestricted access to all areas of the Company and reports directly to the Board in order to maintain independence and objectivity.

B3.2 Description of how the risk management function is integrated into the company structure and decision making process

The Company has a strong risk management culture set by the Board of the Company, and this culture is disseminated through the business of the Company through the various processes and controls which focus on risk exposure.

As outlined above, all key persons involved in the Company assist in the identification of the risk exposures of the Company, and responsibilities are set for managing the risks to appropriate personnel across various facets of the Company. There is open communication encouraged between risk owners, the Risk Management Committee and the Risk Management Function.

Where concerns or recommendations for alternative mitigations are identified, the risk owners are informed and discussions between the Risk Management Committee or Risk Management Function and operations ensure that the issue is addressed. The Risk Management Committee

Maiden Life Försäkrings AB
Solvency and Financial Condition Report (SFCR)
For the twelve month period ending December 31, 2025

or Risk Management Function will monitor progress of actions undertaken. The Risk Management Function reports to the Board and can escalate issues to the Board outside of these meetings at any time.

All material business transactions are assessed for potential risk exposures. New business opportunities are pursued by the Company only when the risk exposures identified are perceived to be acceptable or able to be mitigated against, and considered proportionate to the size of the business opportunity.

B3.3 Description of the ORSA process and how the ORSA is integrated into the organization structure and decision making process

The main purpose of the ORSA process is to define solvency requirements and determine the Company's risk appetite. In addition, the ORSA will identify and evaluate relevant controls and risk mitigating activities. Any potential deficit in solvency identified by the ORSA must be addressed with a specific plan and the Board should decide the actions to be taken.

The ORSA process should be undertaken annually at a minimum, but will be updated if any of the following occurs:

- The risk level exceeds the accepted risk appetite
- There are changes in the underlying assumptions for risk levels/limits
- New insurance classes are introduced or there are major extensions to existing programs
- The risk profile of the Company changes, either because of internal or external changes to the business environment
- A new business strategy is adopted.

The process for completing the ORSA is summarized in the following four sections:

1. Identify, measure and control risks

All major risks that may threaten Company solvency and potential actions for minimizing circumstances in which the risks may materialize are identified. The Company has developed methods for evaluating the risks the Company is exposed to. Consideration will be given to the Company's risk profile in the context of ESG risks.

2. Define risk grading

Appropriate risk grading methods are maintained. The Risk Management Function monitors and measures risk appetite and implements warning systems for when risks are changing and reaching upper limits.

Maiden Life Försäkrings AB
Solvency and Financial Condition Report (SFCR)
For the twelve month period ending December 31, 2025

3. Stress testing

Stress tests and scenario analysis are used to define future solvency requirements under certain negative and unexpected situations. Scenarios putting the Company in insolvency (reverse stress tests) may be used for determining in situations which deem the Company insolvent. The SCR and MCR margins are calculated for realistic stressed scenarios.

A downside scenario in which the Company does not achieve its strategic objectives, as well a combination of various adverse variances to assumptions, was performed in the recent ORSA to outline the impact to solvency in stressed scenarios.

4. Potential solvency requirements

The Board identifies actions for potential solvency shortfalls.

The results of the ORSA provides stakeholders with crucial information to enable critical business decisions to be taken. It provides guidance for the Board of potential risk exposures, solvency requirements and capital planning. The financial projections produced are intended to ensure that the Company is aware of the potential development of its risk profile and capital requirements in various scenarios. In light of this, the results of the ORSA will be used to influence, at least, capital management and Company strategy and allow the Board to determine the capital requirements and set the risk appetite of the Company.

Once the process and results of the ORSA have been approved by the Board, the results and conclusions regarding the ORSA are communicated to all functions for whom the information is relevant to ensure that any necessary follow up action will be taken. Furthermore, where the ORSA has influenced the business strategy and risk appetite of the Company, central functions are informed in order to ensure that the Company operates within these objectives.

B3.4 Review cycle of ORSA

The ORSA process is undertaken and presented to the Board for approval annually at a minimum. Prior to presenting to the Board, the ORSA will be reviewed and approved by the Managing Director. It will be updated outside this annual cycle if certain circumstances occur, such as material changes to the risk profile or strategic direction of the Company.

B3.5 How solvency needs have been determined given the risk profile and how capital management activities and risk management systems interact

The ORSA is the Company's own perspective of the capital resources necessary to achieve business strategies and remain solvent given the Company's risk profile. The ORSA identifies

Maiden Life Försäkrings AB
Solvency and Financial Condition Report (SFCR)
For the twelve month period ending December 31, 2025

and measures all material risks, includes results of stress and scenario testing on business plans and capital resources, and identifies contingent sources of capital support where necessary. There are no risk exposures identified in the risk profile of the Company that are not quantified within the ORSA calculation.

B.4 Internal control system

B4.1 Description of the internal control system

The Board is responsible for the establishment of the internal control system under the appropriate categories: business risks and operational risks. The internal control system is designed to mitigate key risks facing the Company within these two categories.

To address business risks, the Company has created and maintains key policies and procedures surrounding risk management and its internal controls framework that identify operating and oversight responsibilities for identifying and reporting material deficiencies and fraud. The policies and procedures also identify key internal controls that establish sound accounting and financial reporting procedures. The Company has implemented internal controls to ensure that its underwriting, claims processing, financial reporting and information technology systems and applications mitigate fraud, comply with regulatory requirements and meet the needs of its clients. Primary responsibility for day-to-day oversight of the internal controls framework lies with the operations team and control owners. Responsibility and accountability are promoted throughout the Company's activities by ensuring that all controls are assigned to an individual who is aware of their role.

As part of the Company's governance framework, there are a number of policies established that address operational risk. These include: Outsourcing, Conflicts of Interest, Fit & Proper, Protection Against Money Laundering, Anti-Corruption & Anti-Bribery, Internal Control, Remuneration, Events of Material Significance, Product Oversight & governance, Handling Customer Complaints, Business Continuity and ICT function policy.

In addition, the Company is subject to adhering to a number of policies established at a Maiden group level. Additional corporate policies that address operational risks include the Maiden Information Governance Policies, Code of Business Conduct and Ethics, Maiden Global Sanctions Program, Maiden Global Fraud Prevention and Detection Policy, Ethics Hotline, IT Policies, HR Policies, Data Protection Policy and procedures, Outsourcing Policy, and controls over financial reporting.

It is recognised that the Company outsources its administrative and operational activities to a number of parties and the Board is required to review and assess these arrangements in accordance with the Company's Outsourcing Policy.

Maiden Life Försäkrings AB
Solvency and Financial Condition Report (SFCR)
For the twelve month period ending December 31, 2025

B4.2 Description of the compliance function

The Board of the Company has the ultimate responsibility for the monitoring of compliance with laws, ordinances and internal regulations and every Board member shall be aware of and observe all external and internal regulations.

To help achieve this aim the Board has established a Compliance Function to supplement not supplant the responsibilities of the Board to ensure compliance with legislation and applicable requirements. The Compliance Function is responsible for:

- assisting the Board with ensuring ongoing compliance with legislation and applicable requirements
- enhancing the Company's awareness of compliance matters
- identifying the areas of possible non-compliance within the Company and understanding the consequences of non-compliance
- informing the Board of directors at Board meetings about such risks
- ensuring that the Board is kept informed of any amendment to the applicable regulations, legislation and guidelines or the addition of any new requirements and the potential impact on the Company
- providing a reasonable assessment of the effectiveness and consistency of the internal processes used to control the compliance of the Company's operations and protect its reputation through recommendations, supervision and independent controls, and
- informing the Board of directors and relevant personnel of new or changed guidelines.

The Board and the Compliance Function agree an annual compliance plan, which details a monitoring program on key internal controls to ensure that they are operating effectively and to document the tests undertaken and the results obtained.

The Compliance Function reports formally with a written report at least annually to the Board, with updates as necessary.

B.5 Internal audit

B5.1 Description of the internal audit function

The Internal Audit function provides an independent assessment of the adequacy of, and compliance with, the Company's established policies, procedures and risk management framework.

To achieve this, the Internal Audit function:

Maiden Life Försäkrings AB
Solvency and Financial Condition Report (SFCR)
For the twelve month period ending December 31, 2025

- establishes, implements and maintains a three year audit plan setting out the audit work to be undertaken in the upcoming years, taking into account all activities and the complete system of governance of the Company;
- takes a risk-based approach in deciding its priorities;
- reports the audit plan to the Board;
- issues recommendations based on the audit work undertaken;
- verifies compliance with the decisions taken by the Board in relation to the internal audit recommendations.

The Internal Audit function has full, free and unrestricted access to all activities, records (in both paper and electronic format), property and personnel necessary to accomplish the stated purpose. Documents and information given to the Internal Audit function are handled in the same prudent manner as by those employees normally accountable for them, with stringent regard for safekeeping and confidentiality.

The Internal Audit review and appraisal process does not in any way relieve other persons of the responsibilities assigned to them. Responsibility for complying with policies and procedures as well as correcting deficiencies rests with the respective employees and management.

The Internal Audit function presents in person a written report to the Board no less frequently than annually.

B5.2 How the internal audit function remains independent and objective

To permit the rendering of impartial and unbiased judgment essential to the proper conduct of audits, the Internal Audit function is independent of the activities it audits. It does not have direct responsibility for, nor authority over, any of the activities reviewed and does not engage in activities which would normally be reviewed by external auditors.

The Internal Audit function reports directly to the Board. This organizational structure is designed to allow Internal Audit to be independent of all other functions within the Company.

B.6 Actuarial function

The Company's Actuarial Function is responsible for:

- calculating the technical provisions in conjunction with the Company
- reviewing the technical reserves and determining their sufficiency
- contributing to the ORSA process and the calculation of SCR and MCR
- drawing conclusions on the appropriateness, accuracy and completeness of the data underlying the calculations

Maiden Life Försäkrings AB
Solvency and Financial Condition Report (SFCR)
For the twelve month period ending December 31, 2025

- expressing an opinion on the overall underwriting policy and on the reinsurance arrangements
- contributing to the risk management system.

The Actuarial Function reports directly to the Board and submits a written report to the Board no less frequently than annually.

B.7 Outsourcing

B7.1 Description of the outsourcing policy and information on any critical functions that have been outsourced, including the jurisdiction in which the service providers are located

The Company is obliged to establish, implement and maintain effective and transparent systems and controls appropriate to its business. The purpose of the Outsourcing Policy is to establish processes related to outsourcing arrangements and effective reporting and monitoring arrangements of outsourced activities and functions. In addition, the Outsourcing Policy exists to ensure that the Company takes into account the impact of outsourcing on its business and formally considers the additional risks associated with its outsourcing arrangements. The Outsourcing Policy enables the Company to mitigate the risk inherent with such outsourcing arrangements and control the outsourced functions.

Additional Criteria for Outsourcing arrangements:

- that the Service Provider fulfils its obligations in accordance with the outsourcing agreement;
- that the quality of the Company's governance system is not significantly impaired;
- that the operational risk in the Company does not increase significantly;
- that the supervisory authority's ability to exercise supervision is not impaired; and
- that the ability to provide adequate and continuous service to policyholder is maintained.

Provision for the Outsourcing agreements:

- Due diligence is undertaken on the outsourced provider to ensure that they have a capacity and capability to provide the service, financial stability to ensure continued provision of the service and whether any conflicts of interest exist between the outsourced provider and the Company. The assessment will be documented and presented to the Board prior to the appointment of the outsourced service provider.
- An unambiguous description/definition of the function(s) to be outsourced and the duties of both parties.
- A notice period for the termination of the contract by the service provider which is long enough to enable the insurance company to find an alternative solution.

Maiden Life Försäkrings AB
Solvency and Financial Condition Report (SFCR)
For the twelve month period ending December 31, 2025

- That the insurance company is able to terminate the arrangement for outsourcing where necessary without detriment to the continuity and quality of its provision of services to policyholders.
- The terms and conditions, where applicable, under which the service provider may sub-outsource any of the outsourced functions and activities.
- That the service provider's duties and responsibilities deriving from its agreement with the insurance company shall remain unaffected by any sub-outsourcing.
- An agreed standard of resources and service, supported as necessary by performance measures.
- A requirement for regular detailed reporting to a specific frequency from the service provider in respect of their duties and activities.
- The service provider must have appropriate measures to protect personal data, per prevailing data protection legislation.
- The requirement to comply with all applicable laws and any other guidelines designated by the Company.
- An annual review.
- An outsourcing appendix is included within agreements with outsourced partners as standard. In summary, it requires outsourced partners to comply with applicable laws, grant audit access to the Company and its regulators and have appropriate contingency plans. The outsourcing appendix has been expanded in line with EIOPA's guidelines on outsourcing to cloud service providers.

The Company recognises that it remains fully responsible for all outsourced functions and must have procedures and the necessary expertise to monitor and control the outsourced arrangements. Finansinspektionen is notified of the providers of all outsourced central and critical functions.

The Board of the Company may delegate the appointment of an outsourced partner to management but the initiation of an outsourcing arrangement must be reported to the Board.

The Company had the following outsourcing arrangements for critical functions at the end of 2025:

Maiden Life Försäkrings AB
Solvency and Financial Condition Report (SFCR)
For the twelve month period ending December 31, 2025

Function	Critical Service Provider	Jurisdiction
Claims Handling	CUNA Mutual Group Services (Ireland) Limited	Ireland
	Crawford and Company Finland Oy	Finland
	Crawford & Company (Norway) AS	Norway
	Crawford & Company (Sweden) AB, Denmark Branch	Denmark
	Davies Group Ltd	United Kingdom
	Rhino Protect Limited	United Kingdom
	Sedgwick Sweden	Sweden
Software as a Service	Cloud Insurance AS	Norway
	Jay Com AB	Sweden
Central Functions	Maiden Global Holdings, Ltd.	United Kingdom
	Maiden Global Servicing Company LLC	USA
	Marsh Management Services Sweden AB	Sweden
	Marsh AB	Sweden
Other Administrative	Maiden General Försäkrings AB	Sweden
	Maiden Global Holdings, Ltd.	Sweden
	Marsh Management Services Sweden AB	Sweden
Premium & Claims	CUNA Mutual Group Ltd	United Kingdom

The objective of the outsourcing policy is that all material outsourcing arrangements must allow the Company to:

- maintain understanding and control of all aspects of the outsourced function, avoiding additional undue operational risk;
- allow respective regulators to monitor the Company's compliance with jurisdictional laws and regulations;
- demonstrate the ability to measure a service provider's performance; and
- ensure that a service provider has sufficient disaster recovery functions, such that the Company's audit obligations, stability and integrity, cannot be affected by failures of the service provider.

The following is a list of criteria that must be complied with for all new outsourcing agreements and existing material outsourcing agreements:

1. The service provider has the capacity and resources to perform the outsourced functions in a reliable, correct and punctual manner;
2. No conflicts of interest exist that may affect the provision of the outsourced service. Should the service provider be a related party, a referral to the Maiden group Audit Committee is required to approve the terms;

Maiden Life Försäkrings AB
Solvency and Financial Condition Report (SFCR)
For the twelve month period ending December 31, 2025

3. The existence of a formal outsourcing agreement between the Company and the service provider, specifically covering the rights and obligations of both the Company and the service provider; and
4. Provision that local data protection law is complied with under the terms of the outsourcing agreement. Specifically, this should govern information exchange between the Company and service provider.

In addition to standard contract provisions, the contract for outsourcing agreements should include the following:

1. A clear description of the receivables, timelines, deliverables, and legal responsibilities of the service provider under the agreement, detailing the responsibilities accepted by the service provider and those retained by the Company;
2. The requirement of the service provider to comply with all applicable laws and any other guidelines designated by the Company;
3. Provision for monitoring and oversight of the service provider so that any necessary corrective measure can be taken. This would include:
 - a. access to books, records and information relevant to the outsourced activity; and
 - b. right to conduct audits on the service provider whether by the Company's internal or external auditors, or by external specialists appointed by the Company.

B.8 Any other information

B8.1 An assessment of the adequacy of the system of governance to the nature, scale and complexity of the risks inherent in the business

The Board considers the system of governance in place within the Company to be appropriate for the scale and complexity of the risks inherent in the Company. The system of governance is subject to regular internal review, an annual policy and procedure review and update of all policies and if there are changes to the underlying risk profile of the Company, the Board will consider whether changes to the system of governance are appropriate and necessary.

There is no other material information regarding the Company's system of governance.

Maiden Life Försäkrings AB
Solvency and Financial Condition Report (SFCR)
For the twelve month period ending December 31, 2025

C. Risk Profile

Note: Numbers in EUR 000s.

The Company's risk management discipline focuses on both quantitative and qualitative elements as the means to achieve targeted returns through a balanced analysis and assessment of risk. The quantitative aspect of our risk management practice focuses on understanding and controlling a broad array of risk parameters in order to achieve desired returns. The qualitative aspect of our risk management practice focuses on identifying and assessing risks, and taking the necessary steps to reduce or mitigate unintended risks, or those risks that could threaten the achievement of our business objectives. The Company's risk register documents the assessment of its risk exposures.

The SCR calculated as at 31/12/2025 distributed the required capital across the risk categories as follows:

Risk Category	Proportion of Capital Required
Underwriting	30%
Market & Liquidity	33%
Credit	14%
Operational	23%

The risk that the Company is exposed to is now spread across market & liquidity, underwriting and operational.

C.1 Underwriting risk

While the overwhelming majority of the Company's underwriting portfolio has low volatility, material deviation of performance from expected is a key risk. Specific underwriting risks that could unfavorably affect performance and erode capital are:

Inaccurate Pricing. Underwriting performance could be affected by inaccurate pricing and underwriting of risks due to the use of erroneous or incomplete information, data misinterpretation, inaccurate assumptions, or poor or biased judgment.

Macroeconomic Factor. Unanticipated, significant increase in claims frequency and/or severity, including the outbreak of a pandemic or recession.

ESG Factors. Unanticipated, significant increase in claims frequency and/or severity due to climate change.

Concentration/Diversification of Business. A significant portion of revenue derived from one source or a large presence in a certain market could present concentration risk. With a large

Maiden Life Försäkrings AB
Solvency and Financial Condition Report (SFCR)
For the twelve month period ending December 31, 2025

presence in a certain market, changes in the jurisdictional, regulatory, or economic environment could impact results.

Reserving. The reserving process has been built to deliver the most accurate estimate possible based on the information available at the time. Reporting lags inherent in insurance claims, future trends and unanticipated events cause a range of uncertainty around where ultimate loss will land when all claims are closed and settled.

Mitigating actions in place:

Pricing Process: Where possible, the Company prices products at an individual cover level and uses a ground up approach to ensure the most appropriate assumptions for each product and cover are used.

Underwriting Performance Monitoring: Underwriting performance of products is frequently monitored and where adverse performance is experienced, action is taken either to pricing or policy wording to attempt to mitigate a continuation of the trend. Material variations in the losses incurred or claims reserved are investigated and results of this are used to improve the reserving process going forward.

Loss Reserve Adequacy: Annually the methodology used for setting loss reserves on a quarterly basis is reviewed internally and by the Actuarial Function. Part of this analysis includes an assessment on the adequacy of the reserves set and whether the corresponding methodology used was appropriate.

Reinsurance: Where appropriate, the Company considers the use of reinsurance arrangements to reduce exposure to specific lines of business.

Company policies: The Board has approved a number of policies and procedures to assist in mitigating against underwriting risks. Specific policies and procedures that address these risks are the Insurance Technical Guidelines (FTR) including Underwriting Guidelines, Insurance Technical Calculations (FTB), ORSA policy, Risk Management Policy and Business Approval Authority Process.

The Board has defined the risk tolerance for underwriting risk as follows:

Description	Metric	Limits	Tolerance per Limit
Management's right to assume risk on behalf of the Company	Maximum individual risk in relation to available capital ^{*1}	€250	Any exceptions to be decided on a case by case basis by the Board of directors

*1 Management refers to the Managing Director, or any two Directors of the Company

*2 The exposure per individual risk means the total possible benefit payable under the insurance policy as a result of one incident. Exposure is gross of reinsurance.

Maiden Life Försäkrings AB
Solvency and Financial Condition Report (SFCR)
For the twelve month period ending December 31, 2025

The Company's underwriting risk should be considered in context of the business strategy. The majority of underwriting risks have now terminated, therefore the significant risk relates to the reserving risk and whether the other risks (inaccurate pricing, macroeconomic factors, ESG factors and concentration) impact the claims provisions. There is a small amount of business going forward for which all underwriting risks are relevant for.

C.2 Market risk

The prudent person principle states the Company only assumes investment risks that it can properly identify, measure, monitor and control, taking into consideration the overall solvency needs of the Company.

The investment of funds by the Company is designed to ensure safety of principal while generating current income. Accordingly, funds are invested in liquid, investment-grade fixed income securities, for which an active market exists and values are determined by a third party. The investment policy is focused on diversification of risk and capital preservation and sets tolerances for investing in high grade marketable fixed income securities, cash and cash equivalents. In order to limit exposure to unexpected interest rate increases which would reduce the value of our fixed income securities and reduce our shareholders' equity, the Company's policy is to maintain the duration of our fixed maturity investment portfolio combined with our cash and cash equivalents within a reasonable range of the duration of our loss reserves.

The Board has established an Investment and Asset-Liability Management Policy and the Investment Committee oversees that this policy is followed. The Company's Investment Policy is an important component of its overall business model and is designed to preserve capital, provide significant liquidity, and produce sufficient investment income to sustain and grow net income while supporting our policyholder's needs. Specific market risks that could unfavorably affect performance and erode capital are:

Interest Rates: Investments are interest rate-sensitive and the value of the Company's portfolio may be adversely affected by increases in interest rates. Interest rates are highly sensitive to many factors, including governmental monetary policies, ESG factors, domestic and international economic and political conditions, and other factors beyond the Company's control.

Foreign Currency: The Company has exposure to foreign currencies both in investments and within the insurance portfolio. This presents a risk across the balance sheet.

ESG Factors: The risk that investments are downgraded as industries or individual companies become less attractive owing to their ESG credentials.

Maiden Life Försäkrings AB
Solvency and Financial Condition Report (SFCR)
For the twelve month period ending December 31, 2025

Mitigating actions in place:

Investment Policy: The Investment Policy stipulates the investment instruments, duration, currency and credit quality that can be included within the investment portfolio. The parameters around these stipulations have been chosen to ensure that the investment portfolio correctly balances minimizing the risks outlined above while maximizing the return. Adherence to the parameters of the Investment Policy are monitored frequently.

Company policies: The Board has approved a number of policies to assist in mitigating against market risks. Specific policies that address these risks are the Investment and Asset-Liability Management Policy and the Coverage of Technical Provisions Policy.

The Board has defined the risk tolerance for market risk as follows:

Description	Risk Appetite	Metrics and Limits	Tolerance per Limit
Investment Risk: Market Risk	Investment Type	Cash and cash equivalents, government bonds, fixed income products, collateralized loan obligations (CLO's) or inter company loans.	Any exceptions to be decided on a case by case basis by the Board of directors.
	Credit Rating	BBB- or above	Any exceptions to be decided on a case by case basis by the Board of directors.
	Concentration of credit rating	Maximum 40% of portfolio, including cash and cash equivalents, held in securities rated BBB/Baa	Any deviations to be reported to the Board of directors.
Investment Risk: Matching Risk	Covering of technical provisions	Covered by assets corresponding to at least 110% of the technical provisions.	The Board shall be notified when the Company's coverage reaches 120%.

Maiden Life Försäkrings AB
Solvency and Financial Condition Report (SFCR)
For the twelve month period ending December 31, 2025

Description	Risk Appetite	Metrics and Limits	Tolerance per Limit
Investment Risk: Concentration Risk	ORSA Capital	Maintain solvency capital above 120%	Tolerances per risk appetite statement

C.3 Credit risk

As a result of relationships with counterparties, the Company is exposed to credit risk through:

Investment Portfolio: The Company bears the risk of ratings downgrades of securities in its investment portfolio. Further, for any fixed income portfolio, impairment or default of individual securities is always a risk.

Receivables: The Company bears the risk of collecting of premium payments.

Reinsurance Recoverables: Where reinsurance is entered into to mitigate against underwriting risks, such arrangements expose the Company to additional counterparty credit risk.

Financial Institutions: The Company holds the appropriate level of cash required to service forecast cashflows.

Mitigating actions in place:

Aged Debtors: The Company continually monitors and manages debtors and actively pursues overdue accounts.

Credit Risk: The majority of debtors are third party administrators (“TPAs”) appointed to manage the premium collection from policyholders on behalf of the Company. Prior to appointment, all TPAs undergo a due diligence review to ensure that their financial stability is an appropriate risk for the Company to undertake as a debtor.

Reinsurance Recoverables: To counter the credit risk on the reinsurance arrangements, the Company will assess the credit rating of the reinsurance entity and require assurance of funds where necessary. A letter of credit or funds withheld structure may be put in place for additional security.

Cashflow forecasting: Regular cashflow forecasting ensures that excessive amounts of cash are not held.

Company policies: The Board has approved a number of policies to assist in mitigating against credit risks. Specific policies that address these risks are the Investment and Asset-Liability Management Policy, Insurance Technical Guidelines (FTR) including Underwriting Guidelines and the Outsourcing Policy.

Maiden Life Försäkrings AB
Solvency and Financial Condition Report (SFCR)
For the twelve month period ending December 31, 2025

The Board has defined the risk tolerance for reinsurance risk as follows:

Description	Metric	Limit	Tolerance per Limit
Management's right to place reinsurance on behalf of the Company	External reinsurance entity S&P rating	S&P rating AA- or above or suitable security (funds withheld or letter of credit)	Any exceptions to be decided on a case by case basis by the Board of directors
	Group company reinsurance	No group company reinsurance	Any exceptions to be decided on a case by case basis by the Board of directors

With effect from 1 October 2021 the Board approved the inception of an inter company whole account Quota Share reinsurance agreement with Maiden Reinsurance Ltd., a sister company domiciled in the State of Vermont, United States as an exception to the risk tolerances.

C.4 Liquidity risk

The inherent nature of insurance claims are such that unanticipated significant claims activity under the insurance contracts, outside the Company's historical experience, could impact liquidity at any time.

Mitigating actions in place:

Investment Criteria: A portfolio of highly liquid fixed income securities is maintained.

Financial Monitoring and Forecasting: Regular cashflow forecasting ensures that there is sufficient liquidity to meet upcoming obligations without liquidizing investments at short notice and potentially not maximizing the return on investment.

Company Policies: The Board has approved a number of policies to assist in mitigating against liquidity risks. Specifically, the Investment and Asset-Liability Management policy addresses these risks.

The Board has defined the risk tolerance for liquidity risk as follows:

Description	Metrics	Limits	Tolerance per Limit
Investment Risk: Liquidity Risk	Investment Duration	Maximum ten years.	Any exceptions to be decided on a case by case basis by the Board of directors.

Maiden Life Försäkrings AB
Solvency and Financial Condition Report (SFCR)
For the twelve month period ending December 31, 2025

	Anticipated liquidity	All fixed income products shall be capable of being converted to cash within ten days.	Any exceptions to be decided on a case by case basis by the Board of directors.
--	-----------------------	--	---

C.5 Operational risk

Operational risk includes the risk of loss from inadequate or failed internal processes, people, systems and/or external events. Operational risk also includes legal risks. These types of operational failures could negatively impact the Company’s reputation with customers, clients, shareholders, and regulators.

The Company is exposed to operational risk through:

Business Process Risks: The risk of data entry and data processing errors arising from application design misspecifications. Included in this category is the risk that models used in the business have errors embedded within, are incorrectly used, are changed without approval or become unfit for use.

Business Continuity Risks: The risks that threaten or disrupt continuous operations. This comprises business interruption that impacts the ability to access facilities or IT systems.

Compliance Risks: The risk that legal and regulatory breaches that could cause financial or reputational damage.

Cyber/Information Systems Risks: The risk of unauthorized access to systems and data, data loss, utility disruptions, software and hardware failures, and inability to access information systems.

Fraud Risks: Fraud risk includes intentional misconduct or unauthorized activities such as misappropriation of assets, information theft, forgery, and fraudulent claims.

Outsourcing Risks: This is the risk that outsourcing partners are incapable to continue to provide the necessary services.

Mitigating actions in place:

Company Policies and Procedures: There are a number of policies and procedures in place throughout the organization that mitigate operating risk. These are listed under section B4.1 Description of the internal control system.

Maiden Life Försäkrings AB
Solvency and Financial Condition Report (SFCR)
For the twelve month period ending December 31, 2025

Compliance Global Monitoring and Reporting Program: In order to mitigate the risk of financial or reputational damage, the Compliance Function is responsible for the prevention, detection and remediation of compliance failures and risks.

The Board has defined the risk tolerance for operational risk as follows:

Description	Metrics	Metrics and Limits	Tolerance per Limit
Management's authority to undertake operational risk on behalf of the Company	Net risk exposure rating on risk register	High or very high	All operational risks rated high or very high to be reported to Board

C.6 Other material risks

C6.1 Risk exposure, including exposure arising from off balance sheet positions and the transfer of risk to special purpose vehicles

The Company has no off balance sheet positions or Special Purpose Vehicles.

C6.2 Measures used to assess material risks and any material changes

Risk	Mitigation
Solvency	Capital forecasts are undertaken annually through the completion of the ORSA or when the risk profile of the Company materially changes. In addition, capital forecast are updated as assumptions materially change and reviewed at an increased frequency when target solvency margins are at risk of being breached.
Loss of key resources	Key skills and expertise to manage the Company through its current strategic goals are being monitored, with consideration being given to the potential to further outsource roles as any loss of resource requires.
Regulatory (Compliance)	The Company adheres to a governance system which promotes compliance and minimizes the risk of non compliance.
General Data Protection Regulation ("GDPR")	The Company complies with GDPR and UK GDPR as applicable and has a privacy by design approach to personal data.

Maiden Life Försäkrings AB
Solvency and Financial Condition Report (SFCR)
For the twelve month period ending December 31, 2025

Risk	Mitigation
Vendor/Outsourced Service Provision	The Company maintains communication with external providers and monitors the standard of service provision at a frequency appropriate to the criticality of the service being provided.
Outsourced Service Provision Cancellation	All outsourcing agreements are subject to internal review, and have required time periods in place for notice of cancellation by either party.
IT Risks	The Company adheres to an IT governance system which promotes compliance and minimizes the risk of non compliance.
Delays to concluding strategic decisions	The Company has begun reducing operating expenses where possible and the Board is preparing for a potential run-off scenario.
Oversight of third party providers	The Company retains responsibility for activities that are outsourced to third parties and has a risk based framework in place to oversee outsourced activities.

There have been no material changes to the measures used to assess risk exposures.

C6.3 Description of the material risks and any material changes

The risks that are rated high within the Company risk register are as follows:

- **Inability to maintain Solvency Margin:** The risk that the desired solvency margin cannot be maintained. The Company closely monitors solvency and undertakes capital forecasts at least annually through the completion of the Own Risk Solvency Assessment (“ORSA”) or when the risk profile of the Company materially changes.
- **Loss of key resources:** The risk that key resources leave. Key skills and expertise to manage the Company through its current strategic goals are being monitored, with consideration being given to the potential to further outsource roles as any loss of resource requires.
- **Regulatory Risk (Compliance):** The risk that the Company breaches regulatory requirements. The Company has a corporate governance structure in place designed to minimise the risk of non-compliance occurring.
- **General Data Protection Regulation (“GDPR”) Risk:** The Company complies with GDPR and UK GDPR as applicable and has a privacy by design approach to personal data.

Maiden Life Försäkrings AB
Solvency and Financial Condition Report (SFCR)
For the twelve month period ending December 31, 2025

- Vendor/Outsource Provider does not perform against service/contractual agreements: The risk that third party provider performance deteriorates is further exposed due to lack of attention in light of declining business volumes, or less vigorous audit oversight.
- Cancellation or breaking of an outsourcing agreement: The risk that the cancellation or breaking of an outsourcing agreement threatens or disrupts the Company's continuous operations. All outsourcing agreements are subject to internal review, and have required time periods in place for notice of cancellation by either party.
- IT risks: The Company could be exposed to IT risks if there were unauthorised system access, software and hardware failures, or Cloud computing failures. The Company is supported by dedicated IT resource through the Group, and an infrastructure that is tested rigorously to proactively identify and manage IT vulnerabilities.
- Delays to concluding strategic decisions: The Company could incur additional operational expenses should the timeline in which a strategic decision be reached extend beyond that currently forecast. This is the primary goal and focus of the Company and the Board is continually receiving update on forecasts and solvency projections.
- Maintaining appropriate oversight of third party providers: The risk that the Company does not maintain an appropriate oversight of third party providers. This can lead to the risk of deteriorating service delivery and poor consumer outcomes. The Company retains responsibility for activities that are outsourced to third parties.

The Company regularly reviews the risks that it is exposed to and rating of the risk. Following the change in strategy in 2024 all risks were fully re-evaluated by the Company and changes made where appropriate.

The ESG risks that the Company are exposed to are outlined in the risk register as:

- Investment Risk: The risk that investments are downgraded as industries or individual companies become less attractive owing to the ESG credentials.
- Underwriting Risk: The risk that climate change leads to increased incidence or severity of losses.
- Underwriting Risk: The risk that climate change results in a pandemic, impacting risks underwritten by the Company.

The ESG risk is rated low risk.

Maiden Life Försäkrings AB
Solvency and Financial Condition Report (SFCR)
For the twelve month period ending December 31, 2025

C6.4 Material risk concentrations

A material risk concentration refers to an exposure with the potential to produce losses large enough to threaten a company's ability to remain solvent (or maintain its core operations).

The Company manages concentration of credit risk in the investment portfolio through issuer and credit rating limitations. The Company believes it bears minimal credit risk on its cash on deposit. As a result, the Company does not consider itself to be exposed to any significant credit concentration risk on its investments.

During the year, the Company had exposure to credit risk on premiums due from third party partners. This risk was spread across a number of different third parties. This was no longer considered a risk by year-end due to the reduction in premium receivable following the strategic direction of the Company during the year. Any third party who holds money on behalf of the Company is evaluated for their financial security prior to holding Company money, credit terms are strictly monitored and debts pursued where overdue.

The intercompany Quota Share reinsurance agreement presents a potential for concentration risk. The Company manages this potential risk through a funds withheld arrangement, and contractual requirements for minimum notice of cancellation periods to be observed.

C.7 Any other information

There is no other material information regarding the risk profile of the Company.

D. Valuation for Solvency Purposes

Note: Numbers in EUR 000s.

D.1 Assets

D1.1 Separately for each material class of assets, the value of the assets, a description of the bases, methods and main assumptions used for the valuation for solvency purposes

As at 31/12/2025 the Company held the following investments:

Government & Corporate bonds	€1,590
Cash & Cash Equivalents	€7,342

All Government and Corporate bonds were rated at least AA- (S&P) and were traded on an active market. The fair value of the bonds was determined as the market price.

The Company has classified the financial investments as financial instruments according to IAS 39 (International Accounting Standards). A financial asset or financial liability should be classified as a financial instrument if it meets following conditions:

- It is acquired or incurred principally for the purpose of selling or repurchasing it in the near term
- On initial recognition it is part of a portfolio of identified financial instruments that are managed together and for which there is evidence of a recent actual pattern of short-term profit-taking, or
- It is a derivative (except for a derivative that is a financial guarantee contract or a designated and effective hedging instrument).

D1.2 Description of material differences, quantitative and qualitative, between the valuation bases, assumptions and methods used for the valuation for solvency purposes and those used for valuation in the financial statements

The total valuation difference between valuation bases, assumptions and methods used for the valuation for solvency purposes is displayed in section D.2 below.

D.2 Technical provisions

D2.1 Valuation, valuation bases, assumptions and methods to derive the value of technical provisions for solvency purposes

Maiden Life Försäkrings AB
Solvency and Financial Condition Report (SFCR)
For the twelve month period ending December 31, 2025

TECHNICAL PROVISIONS

Solvency II requires Technical Provisions to be segmented by Solvency II lines of business. The Company's segmentation of lines of business is dependent on International Financial Reporting Standards ("IFRS") reserving process that groups the risks using reserving classes. Reserving classes are further split by country and then allocated by currency. The reserves cash flows are discounted by applying risk-free yield curves by currency that are provided by the European Insurance and Occupational Pensions Authority ("EIOPA") to get Technical Provisions by reserving classes. Technical Provisions by reserving classes are then mapped to the Solvency II lines of business.

VALUATION BASIS, METHODS AND MAIN ASSUMPTIONS

The technical provisions are defined as the probability-weighted average of future cash flows, discounted to take into account the time value of money considering all possible future scenarios. The cash flow projection used in the calculation of the best estimate takes account of all the cash in-flows and out-flows required to settle the insurance and reinsurance obligations over their lifetime.

Technical provisions are grouped into the following key components:

- Gross claims provisions: Best Estimate of provisions that relate to the earned exposure.
- Gross premium provisions: Best Estimate of provisions that relate to the unearned exposure i.e. driven from unearned premium and policies which are bound but not yet incepted at the valuation date. It includes a discounted best estimate of expenses required to fulfil known obligations.
- Risk margin: Additional provision to bring the Best Estimates to the level required to transfer the obligations to a third party undertaking.

GROSS CLAIMS PROVISIONS

The IFRS IBNR reserves are calculated at an individual program level and for class 1a) life and class 1b) supplementary life separately. Typically, the calculation is either based on historical development factors or is a function of recently earned premium volumes, expected lags in claims reporting, expected lags in claim payments, expected loss ratios and average claim payments. The calculation is specific to the individual program and is tailored to account for the specific characteristics of that program. IFRS best estimate of IBNR and case reserves are used as the starting point to estimate the gross claims provisions before the following adjustments are applied:

Maiden Life Försäkrings AB
Solvency and Financial Condition Report (SFCR)
For the twelve month period ending December 31, 2025

- Expenses
- Discounting
- Reinsurance recoveries

GROSS PREMIUM PROVISIONS

The Unearned Premium Reserve includes the unearned premium balance as at the valuation date and is used as the starting point to estimate gross best estimate premium provisions before the following adjustments are applied:

- Application of budget loss ratios to reduce the unearned premium reserve for claims liability
- Policies which are bound but not yet incepted at the valuation date
- Expenses
- Discounting
- Future premium (payables and receivables)
- Reinsurance recoveries

The Company has €98 Unearned Premium Reserve as at 31/12/2025.

The calculation of the expected profit included in future premiums has been carried out separately for the homogeneous risk groups used in the calculation of the technical provisions.

The expected profit included in the unearned premiums, net of reinsurance, as calculated for 2024 is 25 EUR.

REINSURANCE RECOVERIES

The reinsurance recoveries are calculated separately for the claims provision and the premiums provision, with the ceded IFRS reserves and ceded unearned premium reserve respectively used as the starting point in the calculation.

For materiality reasons, the reinsurance payables are adjusted by the undiscounted value associated with the losses. This is revisited annually.

RISK MARGIN

The simplified method (simplifications method 1) described in the document “Guidelines on the valuation of technical provisions”, EIOPA-BoS-14/166, guideline 62) approximates the individual

Maiden Life Försäkrings AB
Solvency and Financial Condition Report (SFCR)
For the twelve month period ending December 31, 2025

risks or sub-risks within some or all modules and sub-modules to be used for the calculation of future Solvency Capital Requirements.

VALUE OF TECHNICAL PROVISIONS FOR EACH LINE OF BUSINESS (EUR 000)

Line of Business	Gross Best Estimate	Risk Margin	Total Gross Technical Provisions	Reinsurance Best Estimate
Health, related to Life	924	9	931	(9)
Other Life	2,235	18	2,253	(12)
Total	3,159	27	3,187	(21)

[D2.2 The level of uncertainty associated with the value of technical provisions](#)

The main contributors for uncertainty are:

- Uncertainty in cash flows. The payment of current and future claims is dependent on the cash flows projected by the Company
- Uncertainty in expenses. Actual expense may differ from the expected expense used in the calculations.

The level of uncertainty is mitigated against through the various risk management procedures in place. In particular, pricing and financial forecasting is stress tested to establish the level of variance that the Company can withstand. The level of uncertainty associated with the value of the technical provisions is within the risk appetite of the Company.

[D2.3 Separately for each material line of business, a qualitative and quantitative explanation of any material differences between the bases, methods and main assumptions used for the valuation for solvency purposes and those used for valuation in its financial statements](#)

Below are the material differences between the Solvency II balance sheet and the statutory balance sheet. The largest differences are found in the Best Estimate of technical provisions (Gross and Net) and the Risk margin and Reinsurance payables.

Maiden Life Försäkrings AB
Solvency and Financial Condition Report (SFCR)
For the twelve month period ending December 31, 2025

Technical provisions (amounts in EUR 000)

Items	Statutory	Solvency II	Difference
Technical provision/ Best estimates	-1,968	-3,159	-1,191
Risk Margin	0	-28	-28
Total	-1,968	-3,187	-1,220

Reinsurance share of technical provisions (amounts in EUR 000)

Items	Statutory	Solvency II	Difference
Technical provision/ Best estimates	1,026	21	-1,005

Reinsurance payables (amounts in EUR 000)

Items	Statutory	Solvency II	Difference
Reinsurance payables	1,092	76	-1,016

The total difference between the valuation of the above assets and liabilities is -1,208 EUR.

Best estimate

The technical provisions are to be valued at the current amount that the Company would have to pay if they were to transfer their insurance obligations immediately to another insurance company. The best estimate shall correspond to the probability-weighted average of future cash-flows, taking account of the time value of money (expected present value of future cash-flows), using the relevant risk-free interest rate term structure. The best estimate shall be calculated separately for the premium provision, including expenses required to fulfil known obligations, and for the provisions for claims outstanding for non-life insurance obligations.

Risk margin

The risk margin is related to the amount that insurance and reinsurance undertakings would be expected to require in order to take over and meet the insurance obligations of the Company. The risk margin has been calculated by using one of the simplification methods described in the Technical Specifications. The simplified method (simplifications method 1) described in the document "Guidelines on the valuation of technical provisions", EIOPA-BoS-14/166, guideline

Maiden Life Försäkrings AB
Solvency and Financial Condition Report (SFCR)
For the twelve month period ending December 31, 2025

62) approximates the individual risks or sub-risks within some or all modules and sub-modules to be used for the calculation of future Solvency Capital Requirements.

D2.4 Matching adjustment

The matching adjustment is not applicable for the Company.

D2.5 Volatility adjustment

The volatility adjustment is not applicable for the Company.

D2.6 Transitional risk-free interest rate-term structure

The transitional risk-free interest rate-term structure is not applicable for the Company.

D2.7 Transitional deduction

The transitional deduction is not applicable for the Company.

D2.8 Recoverables from reinsurance contracts and special purpose vehicles

Reinsurance recoverables are expected to be valued on a basis consistent with the insurance obligations. Allowance shall be made for any reinstatement premiums that may be payable to reinsurers. Allowance shall be made for expected uncollectable amounts.

Statutory reinsurance recoverables as of December 31, 2025 were €1,026.

D2.9 Material changes in the relevant assumptions made in the calculations of technical provisions compared to the prior period

Previously technical provisions have included future expenses calculated as the Company's operating expense margin applied to known and committed future premiums. Given the change in strategy, technical provisions now include all foreseeable future costs.

D.3 Other liabilities

D3.1 Valuation, valuation bases, assumptions and methods to derive the value of other liabilities for solvency purposes

The Company has evaluated that all other assets and liabilities on the Company's balance sheet are in compliance with the valuation principles stated in the Solvency II legislation.

D.4 Alternative methods for valuation

Alternative methods of valuation are not applicable for the Company.

D.5 Any other information

There is no other material information regarding the valuation of assets and liabilities for solvency purposes.

Maiden Life Försäkrings AB
Solvency and Financial Condition Report (SFCR)
For the twelve month period ending December 31, 2025

E. Capital Management

Note: Numbers in EUR 000s.

E.1 Own Funds

E1.1 Overview

The Company's primary capital management objectives are to maintain a strong capital base to support the business and to meet regulatory requirements at all times.

The Board has set a solvency capital target in line with the Company's risk appetite and seeks to maintain at least this level of solvency at all times. Capital adequacy is included within every financial report, which is presented to the Board at each Board meeting, and solvency margins are reported more frequently to the Board when required.

Annually the Company undertakes the completion of the ORSA to determine projected capital requirements including scenario testing, over a three year time horizon; more frequent reviews would be conducted if there are major changes contemplated in any capital driver.

There have been no material changes in the capital management policy.

E1.2 Amount and quality of own funds categorized for each tier

	Total Own Funds	Tier 1	Tier 3 (Deferred Tax Asset)
31 st December 2025	€4,867	€4,867	-
31 st December 2024	€5,822	€5,822	-
31 st December 2023	€6,723	€6,278	€445

E1.3 Eligible own funds categorized by tiers to cover SCR

All own funds are tier 1 and tier 3 assets and are eligible to cover the SCR.

E1.4 Eligible own funds categorized by tiers to cover MCR

All own funds that are tier 1 assets are eligible to cover the MCR.

E1.5 Transitional arrangements

There are no transitional arrangements.

E1.6 Ancillary own funds

There are no ancillary own funds.

E1.7 Description of any item deducted from own funds and a brief description of any significant restriction affecting the availability and transferability of own funds

Maiden Life Försäkrings AB
Solvency and Financial Condition Report (SFCR)
For the twelve month period ending December 31, 2025

There are no items deducted from own funds and no significant restrictions affecting the availability and transferability of own funds.

E.2 Solvency Capital Requirement and Minimum Capital Requirement

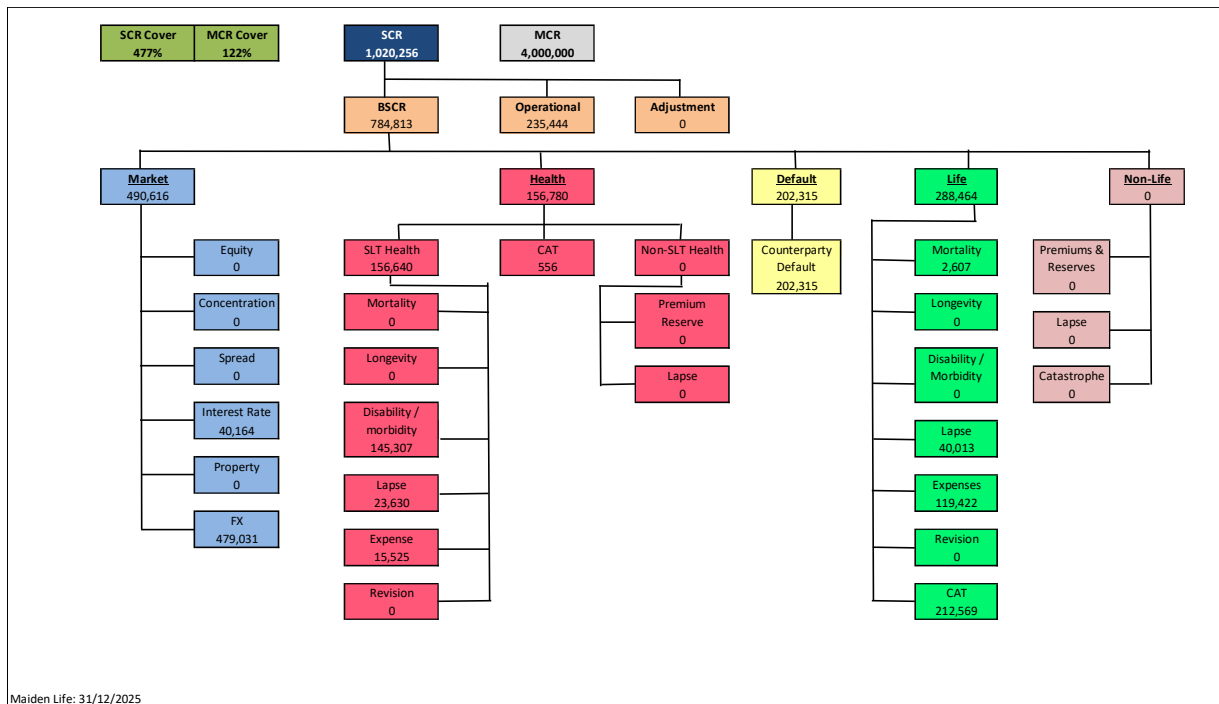
E2.1 SCR and MCR requirements at the end of the reporting period

Amount of the SCR and MCR at the end of the reporting period:

SCR	€ 1,020
MCR	€ 4,000

E2.2 The amounts of the SCR split by risk modules

The SCR tree below presents the Company's SCR and MCR, separated by risk category, as at December 31st, 2025.



E2.3 Information on whether simplified calculations are used and for which risk modules and sub modules of the standard formula

The risk margin has been calculated by using one of the simplification methods described in the Technical Specifications. Simplification Method 1, prescribed by EIOPA-BoS-14/166, guideline 62 is used.

Maiden Life Försäkrings AB
Solvency and Financial Condition Report (SFCR)
For the twelve month period ending December 31, 2025

E2.4 Information on whether and for which parameters of the standard formula the undertaking is using undertaking specific parameters pursuant to Article 107(7)

The Company is not using any specific parameters pursuant to article 107(7).

E2.5 Information on the inputs used to calculate the MCR

The information that has been used for the MCR and SCR calculations is approved by the Board of the Company and the Actuarial Function.

E2.6 Any material changes to the SCR and MCR over the reporting period and the reasons for such changes

The SCR has been declining rapidly through 2025, from 3,500 EUR at year end 2024 to 1,020 EUR at year end 2025. This reflects the continual decrease to the underwriting risk as per the strategic direction of the Company.

Eligible assets have gradually declined, predominantly impacted by the changing strategic outlook of the Company.

The movement in the SCR and eligible assets has resulted in an increasing SCR margin through 2025 (167% at year end 2024 to 477% at year end 2025).

The reducing eligible assets resulted in the MCR cover reducing through 2025 (136% at year end 2024 to 122% at year end 2025).

The MCR was higher than the SCR through 2025.

E.3 Use of the duration-based equity risk sub-module in the calculation of the Solvency Capital Requirement

The Company is not utilizing the equity based sub module.

E.4 Differences between the standard formula and any internal model used

The Company is not using an approved internal capital model.

E.5 Non-compliance with the Minimum Capital Requirement and non-compliance with the Solvency Capital Requirement

There have been no periods of non-compliance with the MCR or SCR.

Maiden Life Försäkrings AB
Solvency and Financial Condition Report (SFCR)
For the twelve month period ending December 31, 2025

E.6 Any other information

To manage capital requirements, the Company:

- Entered into a whole account Quota Share agreement with Maiden Reinsurance Ltd., a sister company domiciled in the State of Vermont, United States effective October 1st, 2021. The agreement is structured on the basis of a Funds Withheld arrangement.
- Received additional capital contributions of €200, €910 and €630 in September 2025, December 2025 and March 2026 respectively from the Shareholder
- Received a signed Parental Guarantee (“PG”) from the Shareholder under which the Company will be able to receive additional capital under certain circumstances.

There is no other material information regarding the capital management of the Company.

Maiden Life Försäkrings AB
Solvency and Financial Condition Report (SFCR)
For the twelve month period ending December 31, 2025

Appendix: QRT Information (000s)

S.02.01.01.01 - Balance sheet

		Solvency II value	Statutory accounts value	
		C0010	C0020	
Assets	Goodwill	R0010		
	Deferred acquisition costs	R0020		
	Intangible assets	R0030		
	Deferred tax assets	R0040		
	Pension benefit surplus	R0050		
	Property, plant & equipment held for own use	R0060		
	Investments (other than assets held for index-linked and unit-linked contracts)	R0070	1,590	1,590
	Property (other than for own use)	R0080		
	Holdings in related undertakings, including participations	R0090		
	Equities	R0100		
	Equities - listed	R0110		
	Equities - unlisted	R0120		
	Bonds	R0130	1,590	1,590
	Government Bonds	R0140	1,590	1,590
	Corporate Bonds	R0150		
	Structured notes	R0160		
	Collateralised securities	R0170		
	Collective Investments Undertakings	R0180		
	Derivatives	R0190		
	Deposits other than cash equivalents	R0200		
	Other investments	R0210		
	Assets held for index-linked and unit-linked contracts	R0220		
	Loans and mortgages	R0230		
	Loans on policies	R0240		
	Loans and mortgages to individuals	R0250		
	Other loans and mortgages	R0260		
	Reinsurance recoverables from:	R0270	21	1,026
	Non-life and health similar to non-life	R0280		
	Non-life excluding health	R0290		
	Health similar to non-life	R0300		
	Life and health similar to life, excluding health and index-linked and unit-linked	R0310	21	1,026
	Health similar to life	R0320	9	589
	Life excluding health and index-linked and unit-linked	R0330	12	438
	Life index-linked and unit-linked	R0340		
	Deposits to cedants	R0350		
Insurance and intermediaries receivables	R0360	113	113	
Reinsurance receivables	R0370	50	50	
Receivables (trade, not insurance)	R0380	119	119	
Own shares (held directly)	R0390			
Amounts due in respect of own fund items or initial fund called up but not yet paid in	R0400			
Cash and cash equivalents	R0410	7,342	7,342	
Any other assets, not elsewhere shown	R0420	2	2	
Total assets	R0500	9,237	10,242	

Maiden Life Försäkrings AB
Solvency and Financial Condition Report (SFCR)
For the twelve month period ending December 31, 2025

S.02.01.01.01 - Balance sheet

			Solvency II value	Statutory accounts value
			C0010	C0020
Liabilities	Technical provisions - non-life	R0510		
	Technical provisions - non-life (excluding health)	R0520		
	Technical provisions calculated as a whole	R0530		
	Best Estimate	R0540		
	Risk margin	R0550		
	Technical provisions - health (similar to non-life)	R0560		
	Technical provisions calculated as a whole	R0570		
	Best Estimate	R0580		
	Risk margin	R0590		
	Technical provisions - life (excluding index-linked and unit-linked)	R0600		
			3,187	1,968
	Technical provisions - health (similar to life)	R0610	934	577
	Technical provisions calculated as a whole	R0620		
	Best Estimate	R0630	924	
	Risk margin	R0640	10	
	Technical provisions - life (excluding health and index-linked and unit-linked)	R0650		1,391
	Technical provisions calculated as a whole	R0660		
	Best Estimate	R0670	2,235	
	Risk margin	R0680	18	
	Technical provisions - index-linked and unit-linked	R0690		
	Technical provisions calculated as a whole	R0700		
	Best Estimate	R0710		
	Risk margin	R0720		
	Other technical provisions	R0730		
	Contingent liabilities	R0740	630	630
	Provisions other than technical provisions	R0750		
	Pension benefit obligations	R0760		
	Deposits from reinsurers	R0770		
	Deferred tax liabilities	R0780		
	Derivatives	R0790		
Debts owed to credit institutions	R0800			
Financial liabilities other than debts owed to credit institutions	R0810			
Insurance & intermediaries payables	R0820			
Reinsurance payables	R0830	76	1,092	
Payables (trade, not insurance)	R0840	223	223	
Subordinated liabilities	R0850			
Subordinated liabilities not in Basic Own Funds	R0860			
Subordinated liabilities in Basic Own Funds	R0870			
Any other liabilities, not elsewhere shown	R0880	254	254	
Total liabilities	R0900	4,370	4,167	
Excess of assets over liabilities	R1000	4,867	6,075	

Maiden Life Försäkrings AB
Solvency and Financial Condition Report (SFCR)
For the twelve month period ending December 31, 2025

S.05.01.01.02 - Life

Z0001 Z Axis:

			Line of Business for: life insurance		Total	
			Health insurance	Other life insurance		
			C0210	C0240	C0300	
Premiums written	Gross	R1410	1,416	6,326	7,742	
	Reinsurers' share	R1420	705	3,176	3,881	
	Net	R1500	711	3,150	3,861	
Premiums earned	Gross	R1510	1,443	6,345	7,788	
	Reinsurers' share	R1520	706	3,185	3,891	
	Net	R1600	737	3,160	3,897	
Claims incurred	Gross	R1610	-72	4,373	4,301	
	Reinsurers' share	R1620	134	1,954	2,088	
	Net	R1700	-206	2,419	2,213	
Expenses incurred		R1900	395	338	734	
	Administrative expenses	Gross	R1910			
		Reinsurers' share	R1920			
		Net	R2000			
	Investment management expenses	Gross	R2010			
		Reinsurers' share	R2020			
		Net	R2100			
	Claims management expenses	Gross	R2110			
		Reinsurers' share	R2120			
		Net	R2200			
	Acquisition expenses	Gross	R2210	813	1,643	2,456
		Reinsurers' share	R2220	417	1,304	1,722
		Net	R2300	395	338	734
	Overhead expenses	Gross	R2310			
		Reinsurers' share	R2320			
		Net	R2400			
Balance - other technical expenses/income		R2510			3,093	
Total technical expenses		R2600			3,827	
Total amount of surrenders		R2700				

S.04.05.21.01 - Home country: Life insurance and reinsurance obligations

Z Axis: Z0001

		Home country	
		C0010	
Premiums written (gross)	Gross Written Premium (direct)	R0020	200
	Gross Written Premium (proportional reinsurance)	R0021	
	Gross Written Premium (non-proportional reinsurance)	R0022	
Premiums earned (gross)	Gross Earned Premium (direct)	R0030	200
	Gross Earned Premium (proportional reinsurance)	R0031	
	Gross Earned Premium (non-proportional reinsurance)	R0032	
Claims incurred (gross)	Claims incurred (direct)	R0040	155
	Claims incurred (proportional reinsurance)	R0041	
	Claims incurred (non-proportional reinsurance)	R0042	
Expenses incurred (gross)	Gross Expenses Incurred (direct)	R0050	176
	Gross Expenses Incurred (proportional reinsurance)	R0051	
	Gross Expenses Incurred (non-proportional reinsurance)	R0052	

Maiden Life Försäkrings AB
Solvency and Financial Condition Report (SFCR)
For the twelve month period ending December 31, 2025

S.04.05.21.02 - Top 5 countries (by amount of gross premiums written): Life insurance and reinsurance obligations
Z Axis: Z0001

		Top 5 countries: non-life					
		DENMARK	IRELAND	ITALY	NORWAY	UNITED KINGDOM	
		C0020_61	C0020_106	C0020_109	C0020_166	C0020_234	
Premiums written (gross)	Gross Written Premium (direct)	R0020	327	874	6	0	6,358
	Gross Written Premium (proportional reinsurance)	R0021					
	Gross Written Premium (non-proportional reinsurance)	R0022					
Premiums earned (gross)	Gross Earned Premium (direct)	R0030	327	874	6	1	6,387
	Gross Earned Premium (proportional reinsurance)	R0031					
	Gross Earned Premium (non-proportional reinsurance)	R0032					
Claims incurred (gross)	Claims incurred (direct)	R0040	129	141	0	-75	4,013
	Claims incurred (proportional reinsurance)	R0041					
	Claims incurred (non-proportional reinsurance)	R0042					
Expenses incurred (gross)	Gross Expenses Incurred (direct)	R0050	114	508	0	0	1,659
	Gross Expenses Incurred (proportional reinsurance)	R0051					
	Gross Expenses Incurred (non-proportional reinsurance)	R0052					

S.12.01.01.01 - Life and Health SLT Technical Provisions

			Other life insurance			Total (Life other than health insurance, incl. Unit Linked)	Health insurance (direct business)		Total (Health similar to life insurance)	
			Contracts without options and guarantees	Contracts with options or guarantees			Contracts without options and guarantees	Contracts with options or guarantees		
			C0060	C0070	C0080	C0150	C0160	C0170	C0180	C0210
Technical provisions calculated as a whole			R0010							
Total Recoverables from reinsurance/SPV and Finite Re after the adjustment for expected losses due to counterparty default associated to TP calculated as a whole			R0020							
Technical provisions calculated as a sum of BE and RM	Best Estimate	Gross Best Estimate	R0030	2,235		2,235		924		924
		Total recoverables from reinsurance/SPV and Finite Re before the adjustment for expected losses due to counterparty default	R0040	12		12		9		9
		Recoverables from reinsurance (except SPV and Finite Re) before adjustment for expected losses	R0050	12		12		9		9
		Recoverables from SPV before adjustment for expected losses	R0060							
		Recoverables from Finite Re before adjustment for expected losses	R0070							
		Total Recoverables from reinsurance/SPV and Finite Re after the adjustment for expected losses due to counterparty default	R0080	12		12		9		9
		Best estimate minus recoverables from reinsurance/SPV and Finite Re	R0090	2,223		2,223		915		915
		Risk Margin	R0100	18		18		10		10
Amount of the transitional on Technical Provisions			R0110							
Best estimate	Technical Provisions calculated as a whole		R0120							
	Risk margin		R0130							
Technical provisions - total			R0200	2,253		2,253	934		934	
Technical provisions minus recoverables from reinsurance/SPV and Finite Re - total			R0210	2,241		2,241	925		925	
Best Estimate of products with a surrender option			R0220	2,223		2,223	915		915	
Gross BE for Cash flow	Cash out-flows	Future guaranteed and discretionary benefits	R0230	1,056		1,056	785		785	
		Future guaranteed benefits	R0240							
		Future discretionary benefits	R0250							
		Future expenses and other cash out-flows	R0260	1,180		1,180	150		150	
		Future premiums	R0270	1		1	10		10	
		Other cash in-flows	R0280							
		Percentage of gross Best Estimate calculated using approximations	R0290							
Surrender value			R0300							
Best estimate subject to transitional of the interest rate			R0310							
Technical provisions without transitional on interest rate			R0320							
Best estimate subject to volatility adjustment			R0330							
Technical provisions without volatility adjustment and without others transitional measures			R0340							
Best estimate subject to matching adjustment			R0350							
Technical provisions without matching adjustment and without all the others			R0360							
Expected profits included in future premiums (EPIFP)			R0370							

Maiden Life Försäkrings AB
Solvency and Financial Condition Report (SFCR)
For the twelve month period ending December 31, 2025

S.23.01.01.01 - Own funds
Z0001 Z Axis:

			Total	Tier 1 - unrestricted	Tier 1 - restricted	Tier 2	Tier 3
			C0010	C0020	C0030	C0040	C0050
Basic own funds before deduction for participations in other financial sector as foreseen in article 68 of Delegated	Ordinary share capital (gross of own shares)	R0010		5,000			
	Share premium account related to ordinary share capital	R0030	5,000				
	Initial funds, members' contributions or the equivalent basic own - fund item for mutual and mutual-type undertakings	R0040					
	Subordinated mutual member accounts	R0050					
	Surplus funds	R0070					
	Preference shares	R0090					
	Share premium account related to preference shares	R0110					
	Reconciliation reserve	R0130			-133		
	Subordinated liabilities	R0140					
	An amount equal to the value of net deferred tax assets	R0160					
Other own fund items approved by the supervisory authority as basic own funds not specified above	R0180						
Own funds from the financial statements that should not be represented by the reconciliation reserve and do not meet the criteria to be classified as Solvency II own funds	R0220						
Deductions							
Deductions for participations in financial and credit institutions	R0230						
Total basic own funds after deductions	R0290	4,867	4,867				
Ancillary own funds							
Unpaid and uncalled ordinary share capital callable on demand	R0300						
Unpaid and uncalled initial funds, members' contributions or the equivalent basic own fund item for mutual and mutual - type undertakings, callable on demand	R0310						
Unpaid and uncalled preference shares callable on demand	R0320						
A legally binding commitment to subscribe and pay for subordinated liabilities on demand	R0330						
Letters of credit and guarantees under Article 96(2) of the Directive 2009/138/EC	R0340						
Letters of credit and guarantees other than under Article 96(2) of the Directive 2009/138/EC	R0350						
Supplementary members calls under first subparagraph of Article 96(3) of the Directive 2009/138/EC	R0360						
Supplementary members calls - other than under first subparagraph of Article 96(3) of the Directive 2009/138/EC	R0370						
Other ancillary own funds	R0390						
Total ancillary own funds	R0400						
Available and eligible own funds							
Total available own funds to meet the SCR	R0500	4,867	4,867				
Total available own funds to meet the MCR	R0510	4,867	4,867				
Total eligible own funds to meet the SCR	R0540	4,867	4,867				
Total eligible own funds to meet the MCR	R0550	4,867	4,867				
SCR	R0580	1,020					
MCR	R0600	4,000					
Ratio of Eligible own funds to SCR	R0620	477%					
Ratio of Eligible own funds to MCR	R0640	122%					

S.23.01.01.02 - Reconciliation reserve
Z0001 Z Axis:

			Value
			C0060
Reconciliation reserve	Excess of assets over liabilities	R0700	4,867
	Own shares (held directly and indirectly)	R0710	
	Foreseeable dividends, distributions and charges	R0720	
	Other basic own fund items	R0730	5,000
	Adjustment for restricted own fund items in respect of matching adjustment portfolios and ring fenced funds	R0740	
Reconciliation reserve	R0760	-133	
Expected profits	Expected profits included in future premiums (EPIFP) - Life business	R0770	
	Expected profits included in future premiums (EPIFP) - Non-life business	R0780	
Total Expected profits included in future premiums (EPIFP)	R0790		

Maiden Life Försäkrings AB
Solvency and Financial Condition Report (SFCR)
For the twelve month period ending December 31, 2025

S.23.02.01.01 - Basic own funds
Z0001 Z Axis:

		Total	Tier 1		Tier 2		Tier 3
		C0010	C0020	Of which counted under transitionals C0030	C0040	Of which counted under transitionals C0050	C0060
Ordinary share capital	Paid in	R0010	5,000	5,000			
	Called up but not yet paid in	R0020					
	Own shares held	R0030					
Total ordinary share capital	R0100	5,000	5,000				
Initial funds, members' contributions or the equivalent basic own - fund item for mutual and mutual type undertakings	Paid in	R0110					
	Called up but not yet paid in	R0120					
Total initial fund members' contributions or the equivalent basic own fund item for mutual and mutual type undertakings	R0200						
Subordinated mutual members accounts	Dated subordinated	R0210					
	Undated subordinated with a call option	R0220					
	Undated subordinated with no contractual opportunity to redeem	R0230					
Total subordinated mutual members accounts	R0300						
Preference shares	Dated preference shares	R0310					
	Undated preference shares with a call option	R0320					
	Undated preference shares with no contractual opportunity to redeem	R0330					
Total preference shares	R0400						
Subordinated liabilities	Dated subordinated liabilities	R0410					
	Undated subordinated liabilities with a contractual opportunity to redeem	R0420					
	Undated subordinated liabilities with no contractual opportunity to redeem	R0430					
Total subordinated liabilities	R0500						

S.25.01.01.01 - Basic Solvency Capital Requirement
Z0001 Z Axis: No

Net solvency capital requirement	Gross solvency capital requirement	Allocation from adjustments due to RFF and Matching adjustment portfolios
C0030	C0040	C0050

Market risk	R0010	491	491	
Counterparty default risk	R0020	202	202	
Life underwriting risk	R0030	288	288	
Health underwriting risk	R0040	157	157	
Non-life underwriting risk	R0050	0	0	
Diversification	R0060	-353	-353	
Intangible asset risk	R0070	0	0	
Basic Solvency Capital Requirement	R0100	785	785	

S.25.01.01.02 - Calculation of Solvency Capital Requirement
Z0001 Z Axis: No

		Value	
		C0100	
Adjustment due to RFF/MAP nSCR aggregation	R0120		
Operational risk	R0130	235	
Loss-absorbing capacity of technical provisions	R0140		
Loss-absorbing capacity of deferred taxes	R0150		
Capital requirement for business operated in accordance with Art. 4 of Directive 2003/41/EC	R0160		
Solvency Capital Requirement excluding capital add-on	R0200	1,020	
Capital add-ons already set	R0210		
	of which, capital add-ons already set - Article 37 (1) Type a	R0211	
	of which, capital add-ons already set - Article 37 (1) Type b	R0212	
	of which, capital add-ons already set - Article 37 (1) Type c	R0213	
	of which, capital add-ons already set - Article 37 (1) Type d	R0214	
Solvency capital requirement	R0220	1,020	
Other information on SCR	Capital requirement for duration-based equity risk sub-module	R0400	
	Total amount of Notional Solvency Capital Requirements for remaining part	R0410	
	Total amount of Notional Solvency Capital Requirements for ring-fenced funds	R0420	
	Total amount of Notional Solvency Capital Requirements for matching adjustment portfolios	R0430	
	Diversification effects due to RFF nSCR aggregation for article 304	R0440	
	Method used to calculate the adjustment due to RFF/MAP nSCR aggregation	R0450	
	Net future discretionary benefits	R0460	

Maiden Life Försäkrings AB
Solvency and Financial Condition Report (SFCR)
For the twelve month period ending December 31, 2025

S.25.01.21.04 Approach to tax rate

		Yes/No C0109
Approach based on average tax rate	R0590	Approach based on average tax rate is not applicable as LAC DT is not used

S.25.01.21.05 Calculation of loss absorbing capacity of deferred taxes

		Solvency II LAC DT C0130	
Loss-absorbing capacity of deferred taxes	LAC DT	R0640	0
	LAC DT justified by reversion of deferred tax liabilities	R0650	0
	LAC DT justified by reference to probable future taxable economic profit	R0660	0
	LAC DT justified by carry back, current year	R0670	0
	LAC DT justified by carry back, future years	R0680	0
	Maximum LAC DT	R0690	0

S.28.01.01.03 - Linear formula component for life insurance and reinsurance obligations

		Result C0040
MCRL Result	R0200	264

S.28.01.01.04 - Total capital at risk for all life (re)insurance obligations

Z0001 Z Axis:

		Net (of reinsurance/SPV) best estimate and TP calculated as a whole C0050	Net (of reinsurance/SPV) total capital at risk C0060
Obligations with profit participation - guaranteed benefits	R0210		
Obligations with profit participation - future discretionary benefits	R0220		
Index-linked and unit-linked insurance obligations	R0230		
Other life (re)insurance and health (re)insurance obligations	R0240	3,138	
Total capital at risk for all life (re)insurance obligations	R0250		

S.28.01.01.05 - Overall MCR calculation

Z0001 Z Axis:

		Value C0070
Linear MCR	R0300	264
SCR	R0310	1,020
MCR cap	R0320	459
MCR floor	R0330	255
Combined MCR	R0340	264
Absolute floor of the MCR	R0350	4,000
Minimum Capital Requirement	R0400	4,000